



**Centurion  
UNIVERSITY**  
*Shaping Lives...  
Empowering Communities...*

## **Module 2: SOP Of Using Drone**

### **Session 7:**

#### **\* Pre-flight Setup**

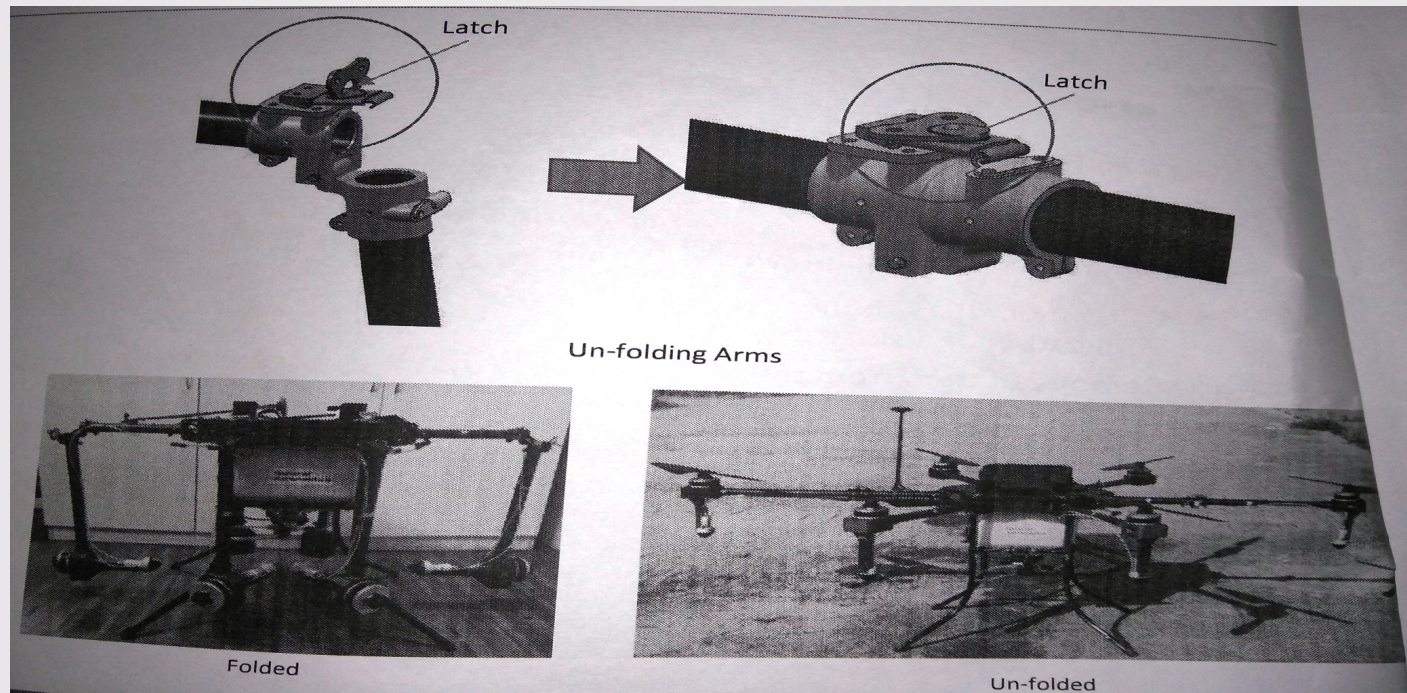


Centurion  
UNIVERSITY  
*Shaping Lives...  
Empowering Communities...*

# Pre-flight Setup

## Step1: Setup arms

- \* Setup the RPAS by unfolding the arms as shown in the figure
- \* Lift the folded part of the arm over the pivot point
- \* Lock the arm using the latch to arrest the movement.

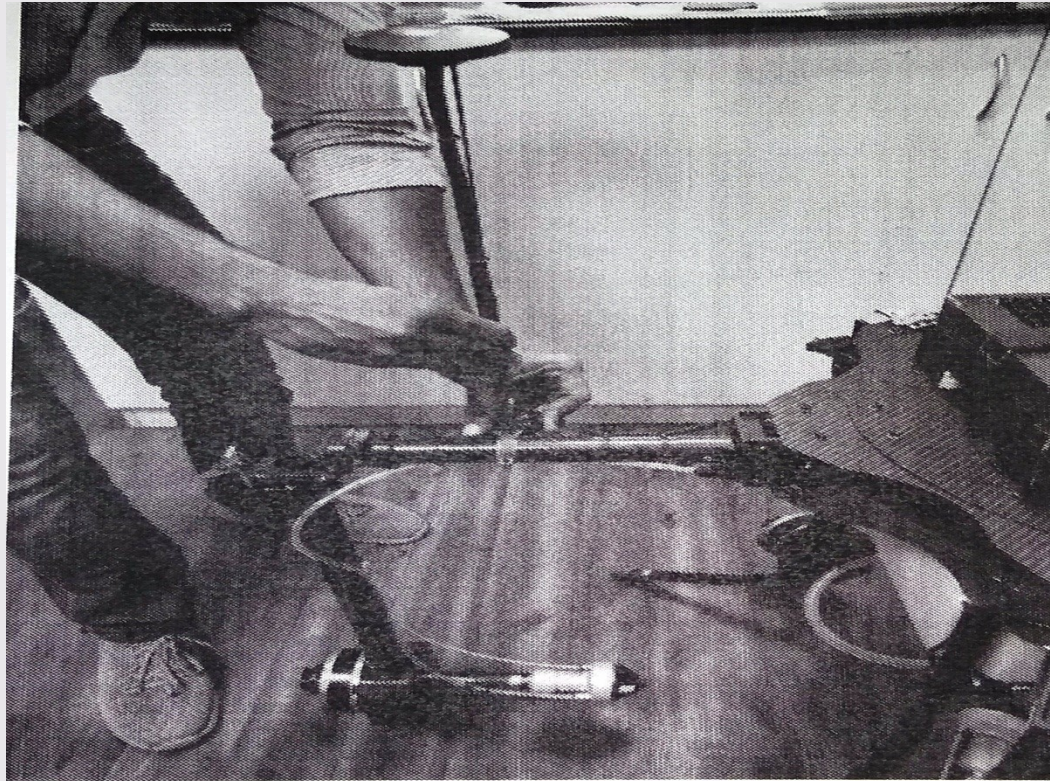




**Centurion  
UNIVERSITY**  
*Shaping Lives...  
Empowering Communities...*

## GPS mast setup

- Unfold the GPS mast
- Hold the base and the mast while unfolding
- Ensure it is locked and will not fall or loose.



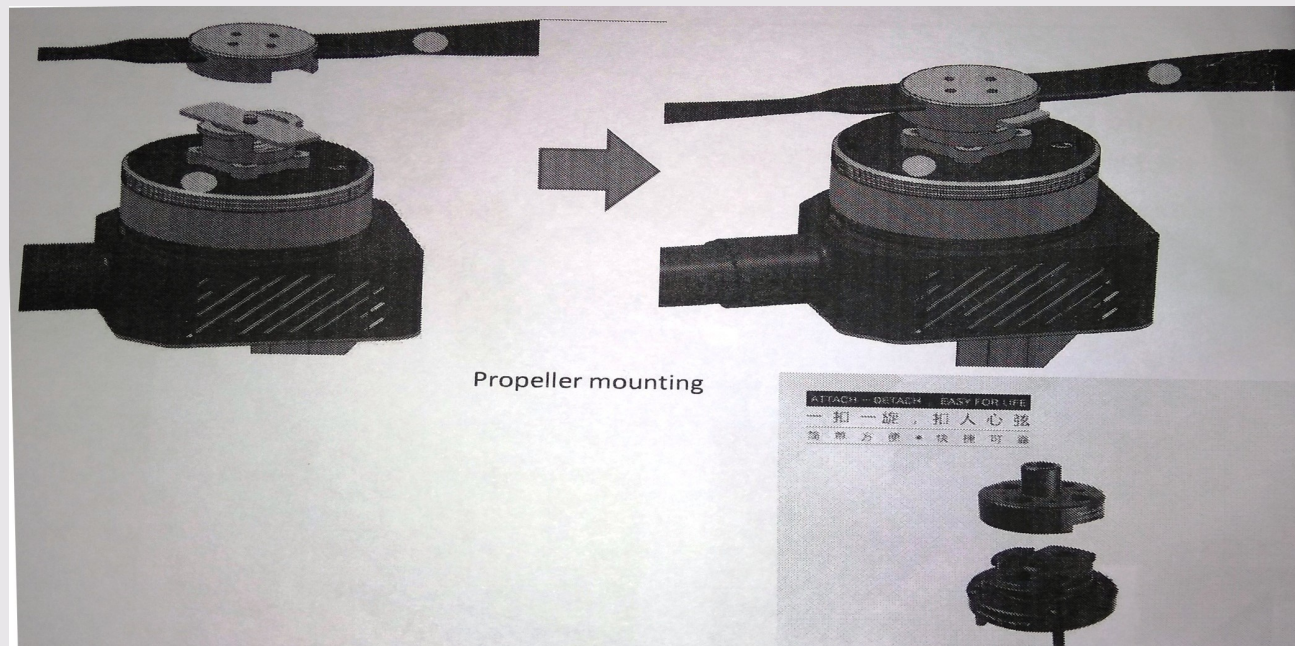
Un folding GPS mast



Centurion  
UNIVERSITY  
*Shaping Lives...  
Empowering Communities...*

## step 2: propeller mounting

- Quick lock adapters are used to mount the propellers
- Press assembled prop adapter onto the prop base, and spin 90 degrees (CW/CCW)





Centurion  
UNIVERSITY  
*Shaping Lives...  
Empowering Communities...*

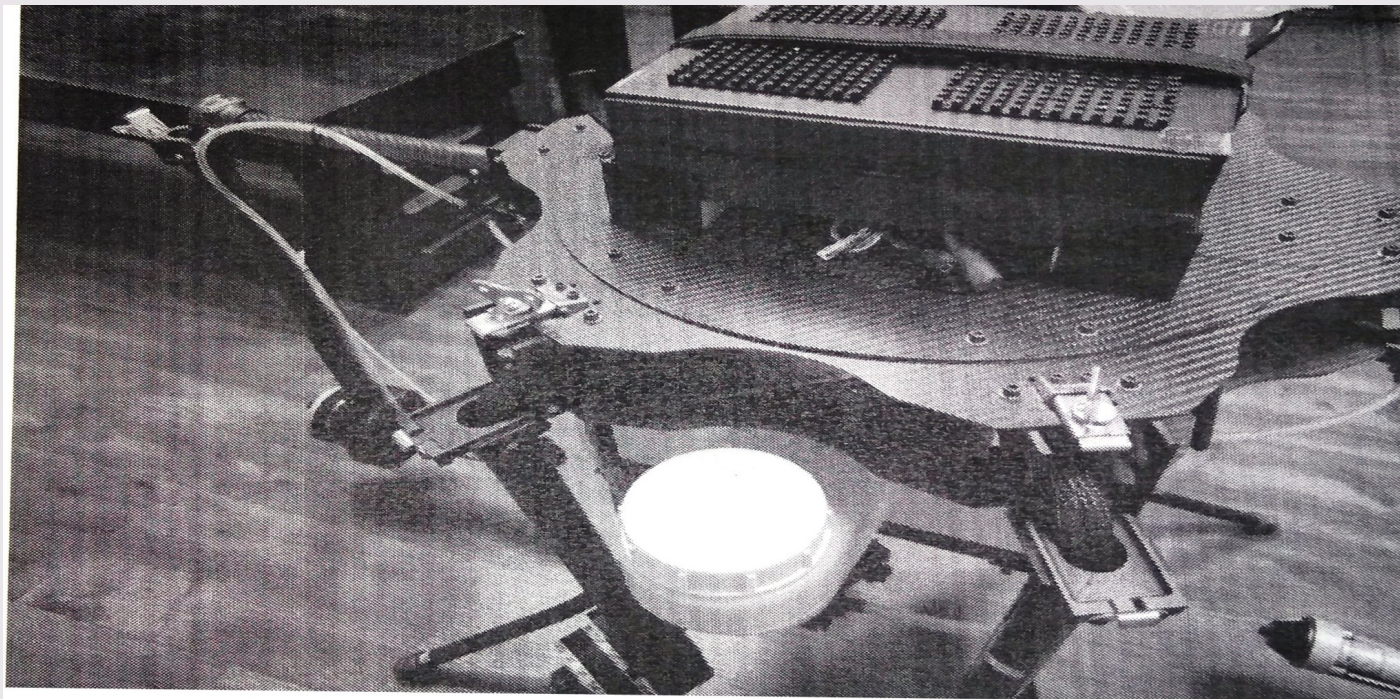
- Assembly is finished when locking plate bounces to the prop base
- Attach the propellers based on their colour coding mentioned on propeller and motor
- Propeller swapping not possible as it will not lock
  - \* Clock wise propeller
  - \* Counter clock wise propeller



Centurion  
UNIVERSITY  
*Shaping Lives...  
Empowering Communities...*

### Step 3: Battery Mounting

- Battery to be Placed in the slot provided
- Power cables facing the rear side of the RPAS to Wards power connectors as shown in the figure





Centurion  
UNIVERSITY  
*Shaping Lives...  
Empowering Communities...*

## Step 4: payload filling

- Ensure all the plumbing joints are secured
- Weigh the amount of payload to «e filled bef re putting into tank
- Use the filter while feeding the payload into tank.
- Be careful adding the payload as the power connectors are close to the tanks inlet
- Also the pump is right down of the tanks inlet

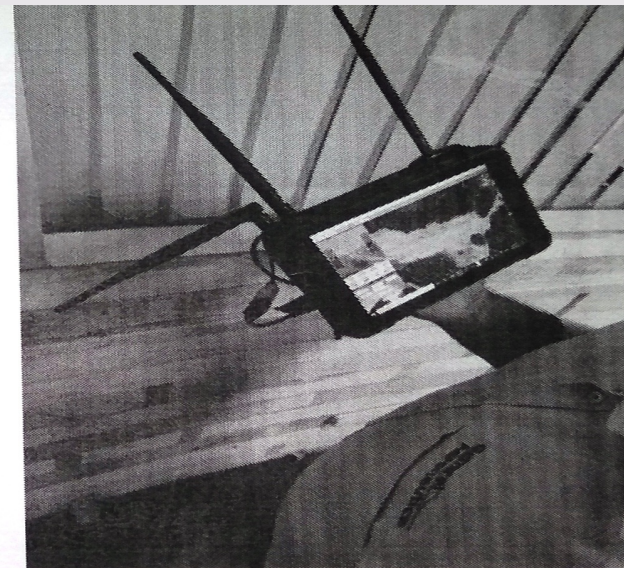




**Centurion  
UNIVERSITY**  
*Shaping Lives...  
Empowering Communities...*

## Step5: GCS setup

- Setup antenna as discussed in RFT
- Launch GCS application by tapping on the GCS app icon from task bar
- Connect the telemetry module to GCS tablet
- Communication to RPAS will be established directly once the RPAS is powered-on



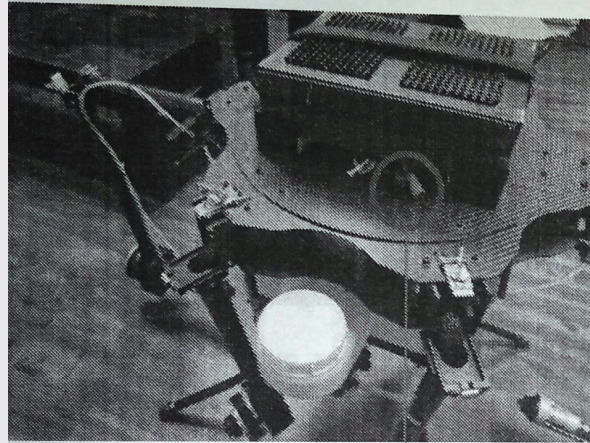




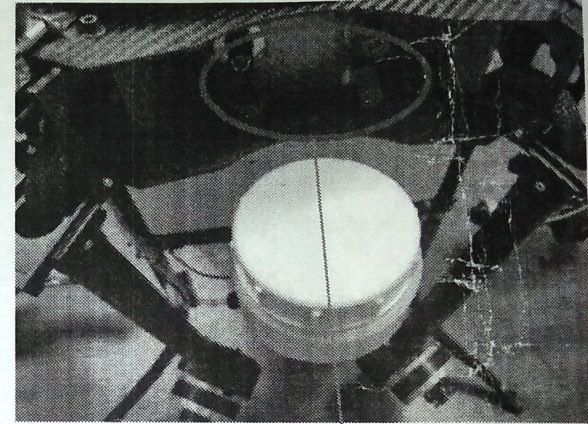
**Centurion  
UNIVERSITY**  
*Shaping Lives...  
Empowering Communities...*

## Step 6: Power-on RPAS

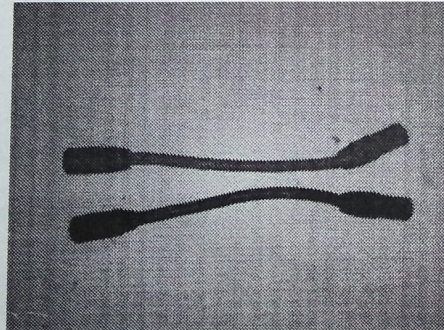
- Follow the power-on sequence as discussed in RFT



Battery power cables



RPAS power ports



Extension cables



Start OK



Centurion  
UNIVERSITY

*Shaping Lives...  
Empowering Communities...*

**Thank you...**