



Centurion
UNIVERSITY
*Shaping Lives...
Empowering Communities...*

Center for Smart Agriculture

High value Cut flowers



Module 1: Gerbera Cultivation

Session 7: Identification and Management of Pest in Gerbera



Centurion
UNIVERSITY

*Shaping Lives...
Empowering Communities...*

Whitefly

- Occurs when climate is hot and dry
- Feed on lower side of leaves
- Excrete honeydew that leads to sootymould





Centurion
UNIVERSITY

*Shaping Lives...
Empowering Communities...*

Leaf Miner

- Larvae causes serpentine tunnels
- Adults causes white specks





Centurion
UNIVERSITY

*Shaping Lives...
Empowering Communities...*

Thrips

- Causes white specks on ray florets
- Silvery grey spot on leaves
- Brown spots on petioles





Centurion
UNIVERSITY

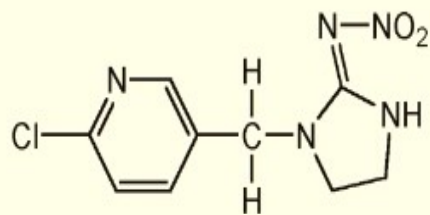
Shaping Lives...
Empowering Communities...

Management



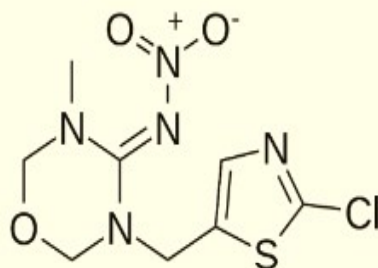
Centurion

Chemical Management



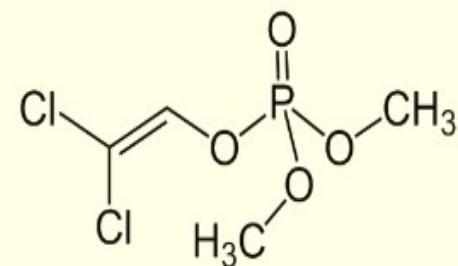
Imidchloprid

@ 0.2 ml/ litre of water



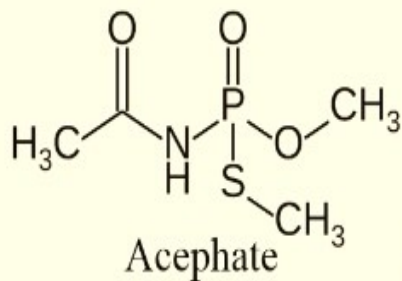
Thiomethoxam

@ 0.3 gram/ litre of water



Dichlorovos

@ 1ml/litre of water



Acephate

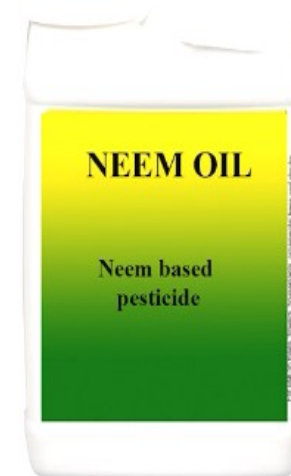
@ 1 gram/ litre of water



**Centurion
UNIVERSITY**

*Shaping Lives...
Empowering Communities...*

Organic Management





Centurion
UNIVERSITY

Shaping Lives...
Empowering Communities...

THANK YOU