



Centurion
UNIVERSITY

PESTS OF SUNHEMP



SUNHEMP HAIRY CATERPILLAR

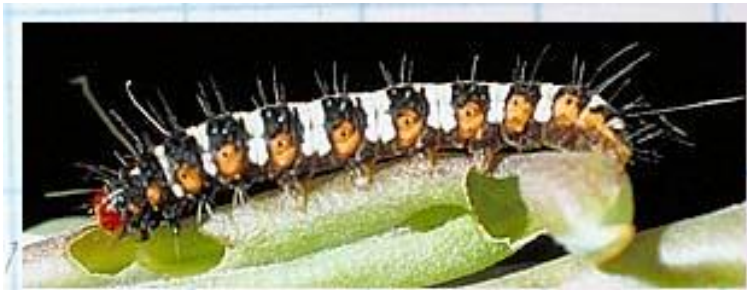
Utetheisa lotrix Argina cribraria

Arctiidae: Lepidoptera

APPEARANCE

- ✓ Moth of *U. pulchella* has pale white fore wing with red and black dots.
- ✓ *A. cribraria* has orange yellow fore wing with black spots ringed with yellow. The hind wings are orange with black spots on them
- ✓ The caterpillar has yellow lines dorsally and dorsolaterally and black stripes and orange patches laterally and a brown head with long brown hairs on its body





© CINHP / G.McCormack

LIFE HISTORY

- The female moth lays about 80-100 round, smooth yellow eggs on leaves singly or in small groups.
- Egg stage lasts for 3-4 days.
- Larval duration is 18-21 days
- Full grown caterpillar pupates in the soil and pupal stage is 6-8 days. The total life cycle takes 27-31 days.

SYMPTOMS OF DAMAGE

- The just hatched larva either defoliates (vegetative stage) or bores into pods (in heading stage).

- The larvae feed on sun hemp and defoliate the plant. The damage will be more (serious in later stages), when they bore into pods and feed on the seeds.
- The symptoms are defoliation of plant, bored seed capsules

MANAGEMENT

- Larval parasitoid *Bracon brevicornis* suppress the population naturally.
- Foliar spray with methyl parathion 2 ml /l or dusting methyl parathion 2D 10 – 12 kg/ac are effective measures

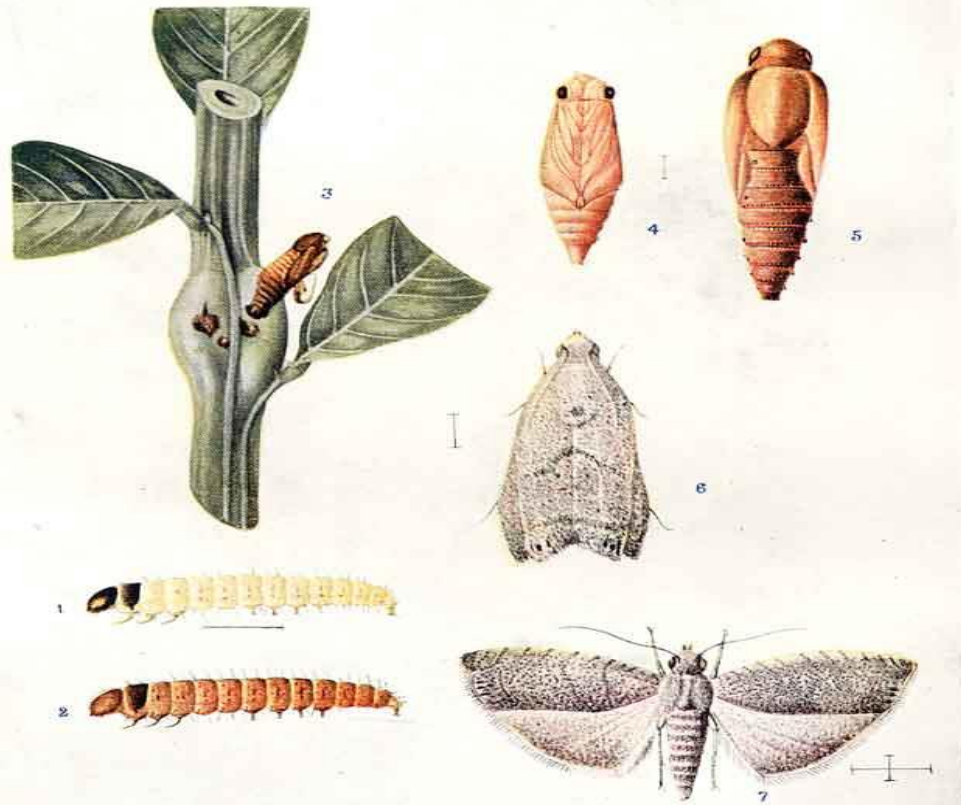
SUNHEMP STEM BORER

Laspeyresia tricenra

Eucosmidae: Lepidoptera

- The caterpillars cause small gall like swellings on shoots and stem and because of this the fiber length is affected and there is profuse branching of infested plants.
- Insecticides recommended against sun hemp caterpillar are effective.

PLATE XL.



LASPEYRESIA TRICENTRA.

SUNHEMP FLEA BEETLES

Longitarsus belgaumensis

Chrysomelidae: Coleoptera

- It is common in South India.
- Adult beetle bite holes on leaves.
- Spraying with endosulfon 1.5ml/l or monocrotophos 1.6ml/l in the evening hours is recommended.

