



Centurion
UNIVERSITY

INSECT PESTS OF JUTE AND THEIR MANAGEMENT

JUTE SEMILOOPER

Anomis sabulifera

Noctuidae: Lepidoptera

APPEARANCE

- ✓ Moth is a medium sized, brownish in colour with dark spots and many lines on forewings
- ✓ Caterpillar is slender, green with dark green stripes and black spots on the body

LIFE HISTORY

- About 150-200 eggs are laid singly on the lower surface of leaf.
- Egg hatches in 2-3 days.
- Pupation takes place in the soil in rough cocoons, Some times on leaves, suspended by means of curved hooks of pupa



SYMPTOMS OF DAMAGE

- In the beginning caterpillar feeds on leaves, as they grow they attack apical buds and top shoots.

MANAGEMENT

- Larval parasite *Tricholiga sorbilans* suppresses the pest naturally.
- Foliar spray with carbaryl 3 g/l or monocrotophos 1.6 ml/l

JUTE STEM WEEVIL

Apion corchori

Curculionidae: Coleoptera

APPEARANCE

- ✓ Adult is a small dull black weevil with a long curved snout
- ✓ Grub is light yellowish in colour with brown head and measures 3 mm in length when full grown.

LIFE HISTORY

- Eggs are laid singly on the stem near the base of the petiole and on seed pods.
- Eggs hatch in 3-5 days into grubs.
- Larval period lasts for 8-18 days
- Pupation takes place in a pupal chamber and lasts for 4 days



SYMPTOMS OF DAMAGE

- Grubs feed inside the bark and damage the fiber. As a result of injury knots are formed on the stem and branching takes place.

MANAGEMENT

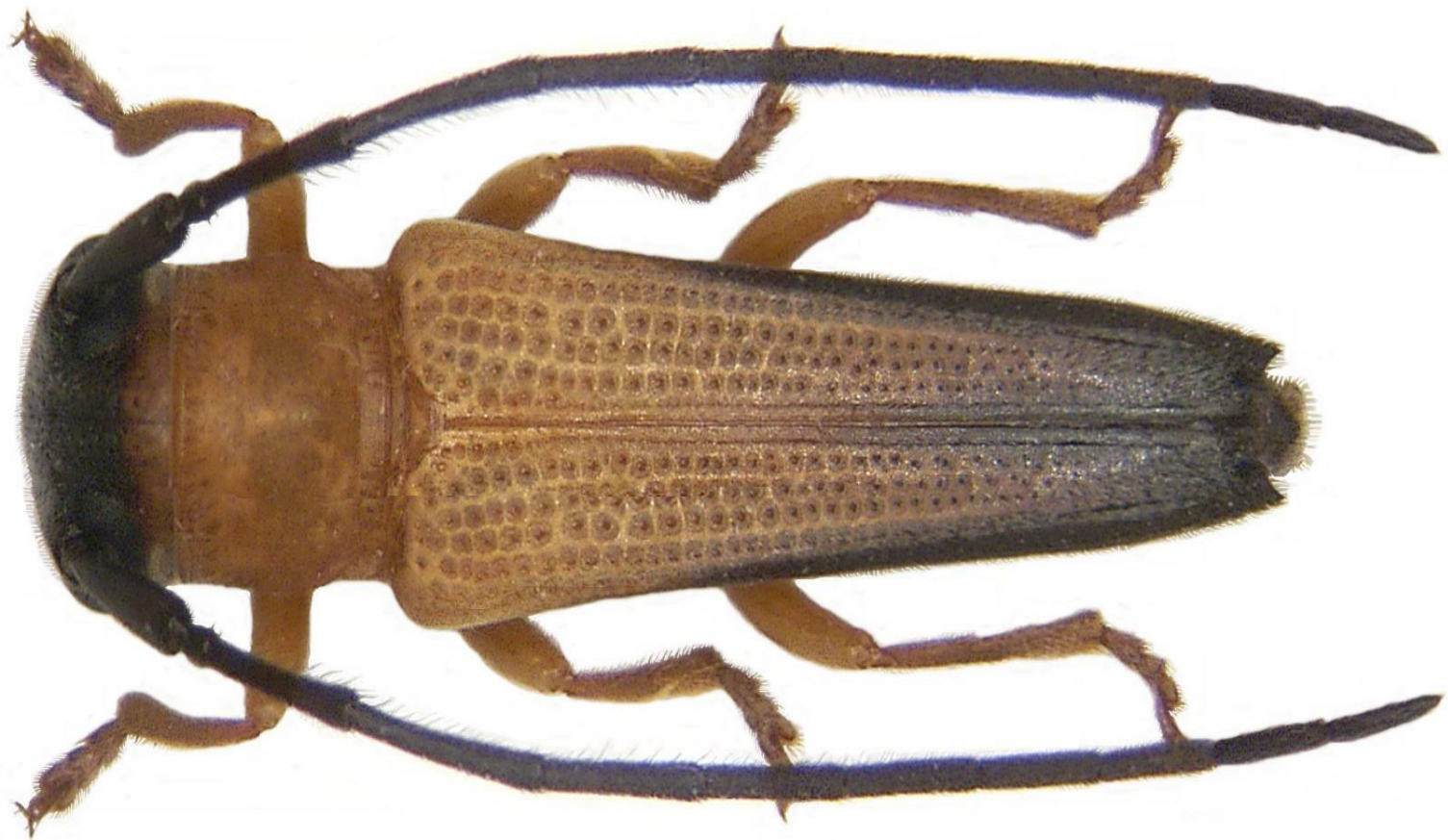
- Destruction of infested plants.
- Dusting methyl parathion 10 – 12 kg/ac as foliar spray @ 2 ml/l

JUTE STEM GIRDLER

Nupserha bicolor

Cerambycidae: Coleoptera

- Adult female girdles stem at two levels as a pre ovipositional operation results the stem withering, drooping and finally dying above the level of the lower girdle.
- Dusting methyl parathion 2D 10 – 12 kg/ac keeps the pest under control.



BIHAR HAIRY CATERPILLAR (Jute)

Spilosoma (Diacrisia) obliqua

Arctiidae: Lepidoptera

- It is a polyphagous pest. Feeds on the tender portion of jute plants and defoliates.
- Management for jute semi looper is also recommended against this.

